

Hillsborough County's Coaching Model

Lynn Dougherty-Underwood

Middle and Secondary Reading Supervisor

Cheryl Jones

Reading First and Elementary Reading Coach Supervisor

Mary Vreeman

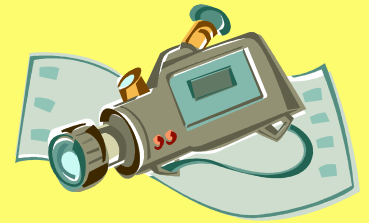
Elementary District Resource Teacher

**Everything You Wanted to Know
About the N.F.L.
(but were afraid to ask)**

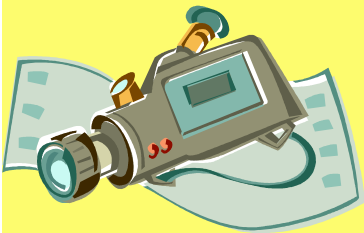


**New
Form
of
Leadership...**

Skycam Overview



- **Historical Stats**
- **The Draft**
- **Making the Cut**
- **Conditioning**
- **Building a Championship Team**
- **The Big Game**
- **Monday Morning Quarterbacking**
- **Field Judges and Referees**



Historical Stats on Coaching...

Elementary K-3

- Began in 1998
- S.A.I. Funding
- District Certification Requirements

Middle/Secondary

- 1983 R.A.I.S.E. Bill
- Site Based Funding
- State Certification Requirements

The Draft...

Elementary K-3 Coaches

- Selection (Pre-Service)
Two Step Process:

Step One:

Training

District

Advertising/Recruitment

Application

Interview

In-Class Observations

Step Two:

School-Based Hiring
(Administrative Decision)

- Salary Cap
Eight Hour Day

Middle/Secondary Coaches

- Selection (Pre-Service)

School-Based Administrative
Decision

National Level Scouting

- Salary Cap
Eight Hour Day

Making the Cut in Elementary

- Spring Training Cuts
- Summer Training Camp Cuts

Spring Training/Conditioning

Elementary K-3

- After School Bi-Monthly Trainings
- Summer Institute
- On-going Training for established Coaches

Two Monthly Meetings:

One full day Whole Group
One Half day Small Group

Middle/Secondary

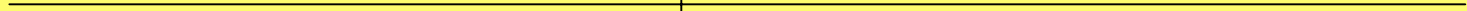
- Summer Institute
- New Coach Mentoring
- Monthly Training
 - Full Day Whole Group

Building a Championship Team

Utilizing your coach to take
your team from good to
great.....

Effective Use of a Coach

Ineffective Use of a Coach



What the Coach Does

- acts as an external expert observer making sure that the player's aim is true and their actions are congruent
- helps players identify and define their specific **goals**, and then organize themselves to attain these goals provides help in motivating and keeping the players motivated to reach their goals

Coaching a Championship Team..

- Team-Building
- Professional Development
- Data Analysis with Teachers
- Provide Knowledge, Modeling, Practice, Observing, Coaching
- Professional Learning Communities
- Reading Leadership Team Member

Game Day...

- Calling the Right Play
 - Interpersonal Skills
- Managing the clock
 - Intrapersonal Skills

Monday Morning Quarterback

- Evidence of effectiveness

Data Sources:

-Teachers

-Students

Your Role as the General Manager:

**Receptive is not
equal to supportive.....**

**(Talk at your table about the
difference between these.)**

What's your game plan???

Which area could you strengthen your support for coaching?

How could you move forward with your coach and faculty?

**Individual commitment
to a group effort**

**THAT is what
makes a team work,
a company work,
a society work,
a civilization work.**

-Vince Lombardi